



BRINGING HEALTHCARE ACCESSIBILITY TO INDONESIA'S MOST UNREACHED

A LOOK INTO OUR DIVERSE
INNOVATIVE HEALTH AND
MEDICAL SERVICE PROGRAMS



MAQNA RESIDENCE APARTMENT, MAQNA SHOPHOUSE R 12 & 15,
JALAN RAYA MERUYA ILIR NO. 88, KECAMATAN KEMBANGAN
JAKARTA 11620

+6221 3971 8111 | info@doctorshare.org

www.doctorshare.org

2023 MEDICAL JOURNEY



RSA dr. Lie Dharmawan II

Marabatuan Island, South Kalimantan
West Tapalang, West Sulawesi
Jampea Island, South Sulawesi
Pemana Island, East Nusa Tenggara
Tarano, West Nusa Tenggara
Bungin Island, West Nusa Tenggara
Karimunjawa Island, Central Java



RSA Nusa Waluya II

Central Buton, Southeast Sulawesi
Larat Island, Tanimbar Islands Regency-Maluku
Seget District, Sorong-Southwest Papua



Flying Doctor

West Sulawesi (Ambo Island, Salissingan Island)
Southwest Sumba
Tanjung Miru, West Kalimantan



Disaster Response

Cianjur Earthquake Response, West Java



Maternal & Child Health Program

Kei, Southeast Maluku
Nias, North Sumatra



Urban Medical Services

Medan, North Sumatra
Babelan, North Bekasi
Greater Jakarta
Depok, West Java
Tigaraksa, Bekasi
Subang, West Java
Tambun, Bekasi
Cibarusah, West Java
Bogor, West Java
Jepara, Central Java
Pemalang, Central Java



Tuberculosis Program

Sentani, Jayapura District



Tuberculosis Private Sector Program

North Jakarta
South Jakarta



CTEV Program

Bali
Lombok, West Nusa Tenggara
Greater Jakarta
Tangerang, Banten
Aceh
Nias
North Sumatra

INDONESIA

Indonesia is the largest archipelago country in the world with 17,001 islands and 275.77 million population or the fourth largest in the world. With these conditions, distribution of services in the health sector becomes a challenge.

The ratio of doctors in Indonesia as at 0.58/1000 population meanwhile for the specialist at 0.15/1000 population. This ratio is considered far from the ideal i.e. 1/1000 population (WHO,2022) . The issue of doctor ratios becomes increasingly complex due to the unequal distribution of health workers and the lack of competency, which has implications for service quality and low competitiveness (Ministry of Health, 2022).

% Puskesmas without doctor



Source: Bappenas 2022

Province with villages that have difficult access to hospital >50%



Source: Bappenas 2022

% Puskesmas didn't have 9 standard health workers



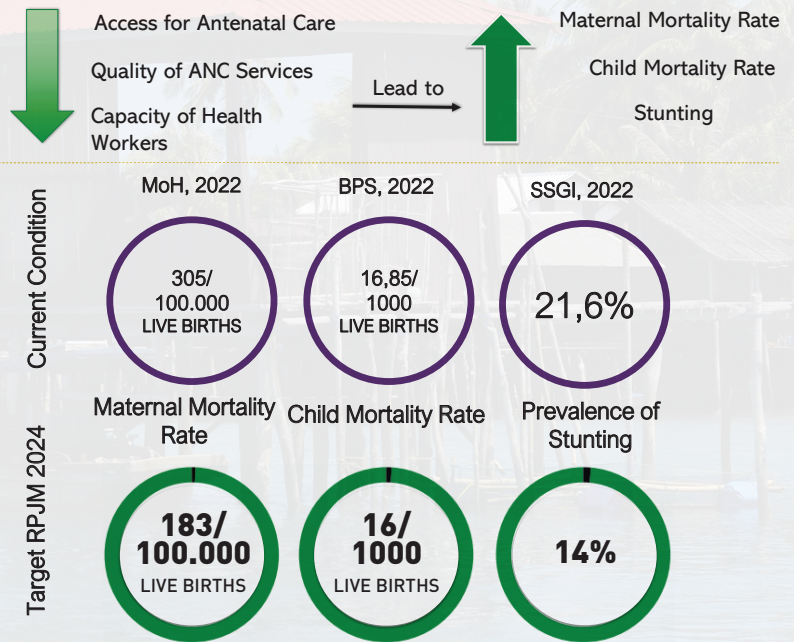
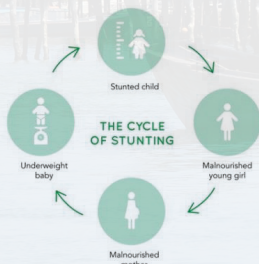
Source: MoH 2022

% Hospitals didn't have 7 standard specialists



Source: MoH 2022

Background – Context of Health Sector in Indonesia



doctorSHARE (Yayasan Dokter Peduli) is a non-profit organization focusing on medical healthcare services and humanitarian aid. Officially established in 2009, doctorSHARE provides free medical services, from out-patient treatments, health consultations to minor and major surgeries, for those who live in rural and remote areas of Indonesia without access to healthcare.

VISION

Empowering people to come out of their suffering holistically by their own power.

MISSION

Improving Indonesia's health outcomes, particularly in the Eastern parts, through holistic healthcare services and innovative sustainable programs with the spirit of volunteerism.

A. SHORT-TERM PROGRAMS



A.1 - RSA dr. LIE DHARMAWAN II

Est. 2022

RSA dr Lie Dharmawan II replaces RSA dr Lie Dharmawan which sank after sailing across the nation to provide medical services for 8 years (March 2013 - June 2021). Floating Hospitals are considered to be an ideal model of healthcare facility as they can reach communities living in remote and rural Indonesian islands.

Being the first and smallest private floating hospital in the world, RSA dr. Lie Dharmawan II is equipped with major and minor surgery rooms, resuscitation space, patient examination room, USG and laboratory, similar to a Type D landed-hospital.

The Flying Doctors is a key program established to address the healthcare needs of people in the areas that can only be accessed by air or on-foot. doctorSHARE partners with several pilots of small aircrafts / helicopters, that have long served the mountains of Papua, Kalimantan, and many remote area/islands that can't be reached by floating hospitals.

This healthcare service is temporary and able to provide health examination, pregnancy check, and minor surgeries, as well as health promotion and training.



A.3 - URBAN MEDICAL SERVICES

Est. 2009

On top of remote island healthcare, doctorSHARE also conducts periodic free medical services for those in the low - Socio Economic Status bracket surrounding Jabodetabek area.

The services include health examination and minor surgeries.. Several of these urban medical services also provide pregnancy checkup and dental clinic.

B. LONG-TERM PROGRAMS

B.1 - RSA NUSA WALUYA II

Tanimbar, Maluku Tenggara Barat - Est. 2018

A refurbished accommodation barge, RSA Nusa Waluya II is the world's first private hospital barge that provides both primary and secondary health-care services, similar to a Type C landed-hospital. The barge is equipped with 2 major surgery rooms, recovery room, ICU, general and specialist examination rooms (OB/GYN, pediatrics, dental, ophthalmology), maternity ward (delivery room, baby room with 6 beds), radiology rooms (X-Ray, USG, EKG), laboratory, pharmacy, ER, as well as inpatient rooms of 25 beds. The barge also provides accommodation for 40 medical volunteers and 20 crews.



B.2 - MATERNAL & CHILD HEALTH PROGRAM

Kei, Maluku Tenggara - Est. 2009 & Nias - Est. 2022

Responding to the chronic malnutrition issue in Maluku, doctorSHARE initiated the MCH program by reactivating the clinic in 2018. This program aims to restore the nutrition status of severely malnourished children under 5yo and women who suffer from chronic energy deficiency through the provision of nutritious food and medical treatment. To support the local primary healthcare, this program also serves as a clinic, demplot garden for piloting vegetables planting, and health promotion facilities. In Nias, the clinic also provides Congenital Talipes Equinovarus (CTEV) treatment.



B.3 - TUBERCULOSIS PROGRAM

Sentani, Papua - Est. 2019

The Tuberculosis (TB) Program aims to reduce the prevalence of TB in Papua through awareness, early detection and complete treatment of TB cases, and community empowerment to become PMO (*Pendamping Minum Obat*).

This piloting clinic is also a treatment hub, servicing regular medical services for the community in Sentani area.



C. DISASTER MANAGEMENT, CLINIC & HEALTH PROMOTION

C.1 - DISASTER MANAGEMENT

Est. 2013

Due to its geographic location, Indonesia is susceptible to natural disasters. The government has established a disaster response system when faced with such situation that can happen at any time. doctorSHARE is officially listed as one of the Indonesian government partners (Health Crisis Center) for disaster response and preparedness. doctorSHARE has the capacity of Emergency Medical Team (EMT) type 2 based on WHO standards. When disaster happens and medical needs are required, doctorSHARE deploys emergency medical team in the affected area and provide rehabilitation and recovery program on health sector in the affected community.



C.2 - doctorSHARE CLINIC

Est. 2015

Located at doctorSHARE's main office, the clinic provides general medical service, laboratory service and also minor surgery.

The clinic has collaborated with Corporate Social Responsibility (CSR) departments in several companies by providing health check-ups in and out of Jakarta. This clinic also provides CTEV treatment for community in Jakarta and Tangerang area.



C.3 - HEALTH PROMOTION

Est. 2018

doctorSHARE promotes health awareness through health seminars for companies and Junior Doctor Program for children aged 10-14 years old. The program enables parents to identify their children's passion in the field of medicine from an early age and develop their ability to give first aid responses. The highlights of the program include first aid response (CPR, pulse checking), wound management and introduction to basic medical practices and instruments with hands-on learning via case studies.



D. CHANGING LIFE PROGRAM & ADVOCACY

D.1 - AVOIDABLE BLINDNESS

Est. 2022

Cataract is a degenerative process in the eye that results in clouding of the lens of the eyeball, impairing vision and causing blindness. This condition is caused by a biochemical reaction that results in protein clumping in the lens of the eye. Since 2022, doctorSHARE has started "Changing Lives" program which aims to help communities affected by health issues such as cataracts. The collaboration with the Indonesian Ophthalmologist Association (PERDAMI) allows them to perform cataract surgeries in areas with difficult access to healthcare services, especially by ophthalmologists, to bring hope and change in their lives.



D.2 - CLUBFOOT

Est. 2022

Clubfoot, also known as CTEV (Congenital Talipes Equinovarus), is a condition in which a baby is born with one or both feet turned inward or downward. This condition can be treated with various methods, one of which is the Ponseti method.

Since 2022, doctorSHARE has started the "Changing Lives" program which aims to help communities affected by health issues such as Clubfoot. Through this program, doctorSHARE is committed to bringing hope and change in the lives of children facing clubfoot conditions, giving them the opportunity for a brighter future.

D.3 - ADVOCACY

Est. 2021

DoctorSHARE's advocacy program is committed to improving healthcare in local communities by supporting local governments in addressing tuberculosis, Maternal and Child Health, Sexual Reproductive Health and Mental Health Issues. We collaborate with local networks and working groups to design effective health sector interventions and strengthen the capacity of local health offices and disaster management units in disaster risk reduction within the health sector. Through activities like workshops and network building, we empower communities and healthcare professionals, fostering a collaborative environment for positive changes in public health. Our program is dedicated to creating a healthier and more resilient future for these communities.



**OVERALL IMPACT
2009-2022**

**+270,000
LIVES IMPACTED**

**810 CATARACT
SURGERIES (2021-2022)**

**4,169 MAJOR
SURGERIES**

**203,053 OUTPATIENT
TREATMENTS**

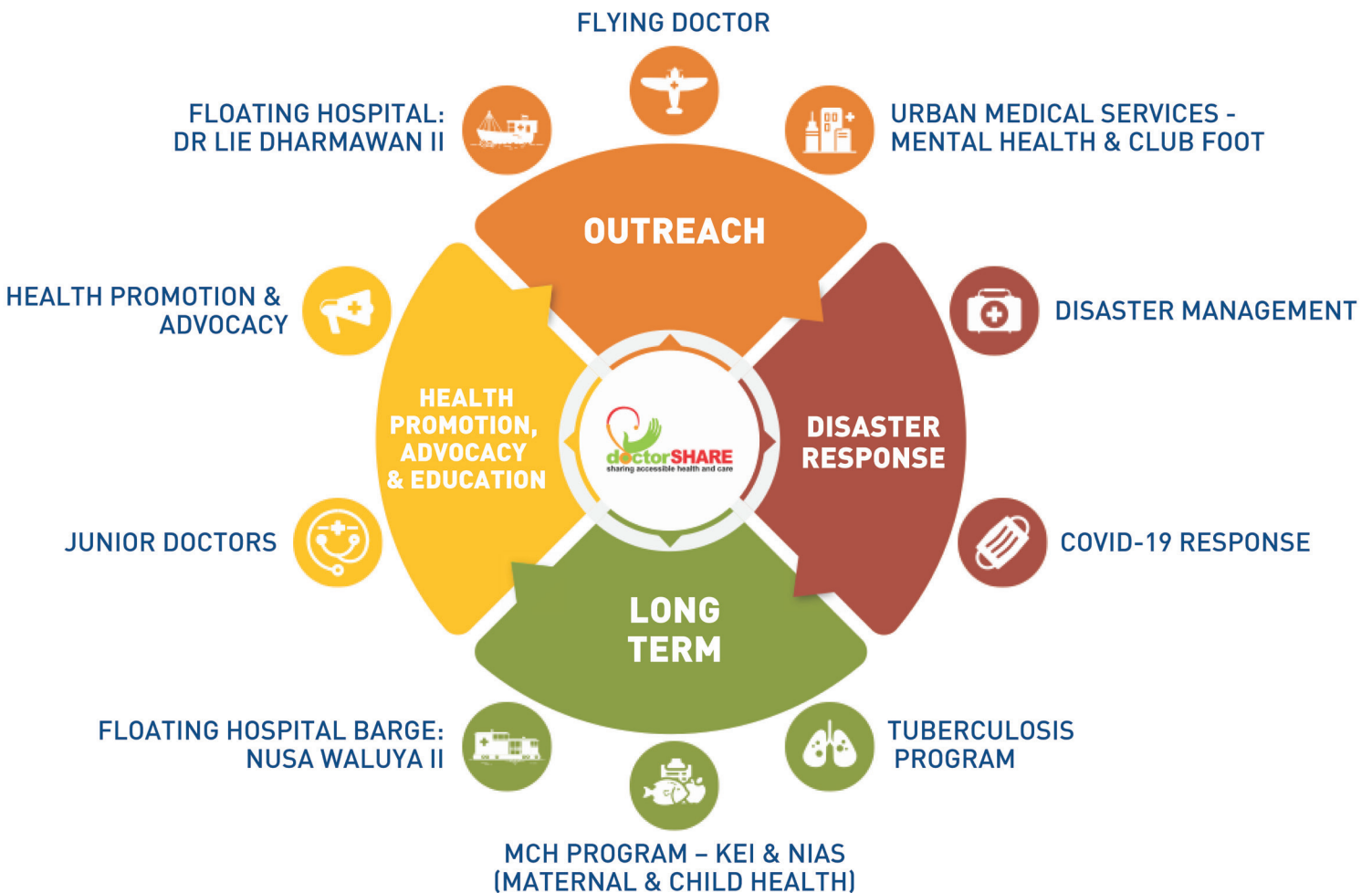
**6,208 MINOR
SURGERIES**

**2,777 USG & ANTENATAL
CONSULTATIONS**

**55,921 HEALTH EDUCATION
& PROMOTIONS**



PROGRAMS FISCAL YEAR 2023



2020 - 2025

LONG-TERM GOALS

MATERNAL & CHILD HEALTH

Reduce Maternal Mortality Rate
Target: 177/100,000 to 70/100,000 (by 2030)

TUBERCULOSIS

Increase Tuberculosis Success Rate
Target: 78% to 85%

STUNTING

Reduce stunting rate
Target: 30% to 24.8%
(10-12 million U5 children)



HEALTHCARE ACCESS

Establish a blueprint solution to remote-island healthcare with integrated & holistic program between floating hospitals and land-based community healthcare

MEDICAL SERVICE TARGET

Provide Primary & Secondary healthcare support to 150,000 patients across the core regions of focus

DISASTER MANAGEMENT

Strengthen Disaster Medical Response

TOTAL ANNUAL BUDGET 2024*

GRANT INITIATIVES & SUPPORT FUNCTION

IDR 15.421mio - 29%

URBAN MEDICAL SERVICES

IDR 475mio - 1%

TUBERCULOSIS PROGRAM

IDR 1.564mio - 3%

MCH PROGRAM - KEI

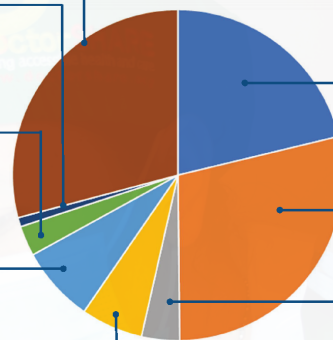
IDR 3.199mio - 6%

MCH PROGRAM - NIAS

IDR 3.921mio - 7%

IDR 52,922mio
or **USD 3,525,758**

TOTAL FUNDS NEEDED FOR ALL DOCTORSHARE'S 2023 PROGRAMS



PHINISI FLOATING HOSPITALS

IDR 11.237mio - 21%

NUSA WALUYA II FLOATING HOSPITAL BARGE

IDR 15.134mio - 29%

FLYING DOCTORS & DISASTER MGMT

IDR 1.969mio - 4%

*Disclaimer: Budget is subject to changes as many of the planned medical trips are dependent on weather & field conditions.

WE ARE NOT ALONE COLLABORATIVE EFFORTS ON THE GROUND

INSTITUTIONS



UNIVERSITIES



Veritas, Probitas, Justitia
F.C.T. 1849



UNIVERSITAS ATMA JAYA YOGYAKARTA
serviens in lumine veritatis



UNIVERSITAS GADJAH MADA
FAKULTAS HUKUM

PARTNER ORGANIZATIONS





WE INVITE YOU TO BE OUR PARTNER

TO HELPING THE THOUSANDS LIVING IN INDONESIA'S
MOST REMOTE AREAS RECEIVE THE HEALTHCARE
SUPPORT THEY DESERVE.

For donation info : **+62 896-5446-3941**

For partnership inquiries :

donation@doctorshare.org

YAYASAN DOKTER PEDULI
IDR CURRENCY

BCA 198-550-7777

BNI 1350 96 2018

FOREIGN CURRENCY

OCBC

5458 0005 3708

SWIFT CODE : NISPIDJA

SCAN QRIS TO DONATE



doctorSHARE secara UMUM	Tidak ada penambahan	IDR 1.000.000
Rumah Sakit Apung Nusa Waluya II	Angka 1 dibelakang	IDR 1.000.001
Rumah Sakit Apung dr. Lie Dharmawan II	Angka 2 dibelakang	IDR 1.000.002
Flying Doctor	Angka 3 dibelakang	IDR 1.000.003
Pelayanan Medis Urban	Angka 5 dibelakang	IDR 1.000.005
Kesehatan Ibu dan Anak Pulau Nias	Angka 6 dibelakang	IDR 1.000.006
Kesehatan Ibu dan Anak Pulau Kei	Angka 7 dibelakang	IDR 1.000.007
Kesehatan Ibu dan Anak Papua	Angka 8 dibelakang	IDR 1.000.008
Life Changing CTEV Program (Kaki Pengkor)	Angka 9 dibelakang	IDR 1.000.009
doctorSHARE Disaster Management	Angka 10 dibelakang	IDR 1.000.010

OUR OFFICE & CLINIC

DKI JAKARTA

doctorSHARE Secretariat
(Yayasan Dokter Peduli)
Maqna Shophouse R 12 & 15,
Maqna Residence Apartment
Jalan Raya Meruya Ilir No. 88
Kecamatan Kembangan,
Jakarta 11620

MALUKU

Klinik Pratama Kei
Ohoi Rahareng Atas
Kecamatan Kei Besar,
Kabupaten Maluku Tenggara,
Maluku 97631,
Indonesia

PAPUA

Klinik Sentani
Sentani Lake Unit Headquarters,
Desa Sereh, Kecamatan Sentani,
Kabupaten Jayapura,
Papua 99352,
Indonesia

Klinik Abepura
Jalan Raya Tanah Hitam
(Seberang Bank Mandiri
KCP Tanah Hitam)
Kecamatan Abepura,
Kota Jayapura,
Papua 99325, Indonesia

NIAS

Klinik Pratama Rawat Inap
Jalan Dolok Martimbang, Boyo.
Gunung Sitoli, Saombo,
Kecamatan Gunungsitoli,
Kota Gunungsitoli,
Sumatera Utara 2281
Indonesia

For NEWS UPDATE check @doctorSHARE



+6221 3971 8111 | info@doctorshare.org | www.doctorshare.org